



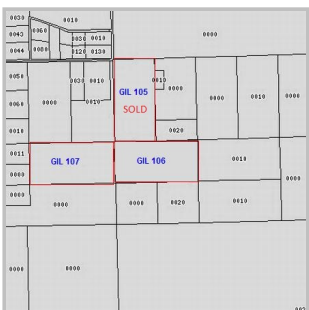
GIL 105/106/107 Description

Area	Bell
Lot Size	20 Acres
No. Lots	Two - will split.
Price	\$65,000 each

Located just north of Bell, Fl. GIL 105 has been sold but we will sell the remaining 40 acres as one parcel or as lots of 10 or 20 acres.

Directions to the Property

1	From Bell, Fl. go north on US 129 to NW 30th St. and turn right (east).
2	Go 1.5 miles to the intersection of NW 30th ST and NW 20th Ave. Special Note: The NW 20th Ave sign is NOT there. It will be the next intersection past NW 25th Ave, which does have a sign.
3	Continue through the intersection for about 150 ft. to a gate with a "RESIDENTS ONLY" sign attached to it. Our "FOR SALE" sign is to the right and before the gate.
4	GIL 105 is sold and will be the SE corner property. GIL 106/107 will be directly behind (south of) GIL 105. See the plat for more details.



Plat of the Property

Call 941.778.7980 or 941.725.2051 for additional details.