

TRACT 36
SOUTH 1/2 OF NORTHWEST 1/4 OF
SOUTHEAST 1/4 OF SOUTHWEST 1/4

TRACT 37
EAST 1/2 OF THE NE 1/4
OF SW 1/4 OF SW 1/4

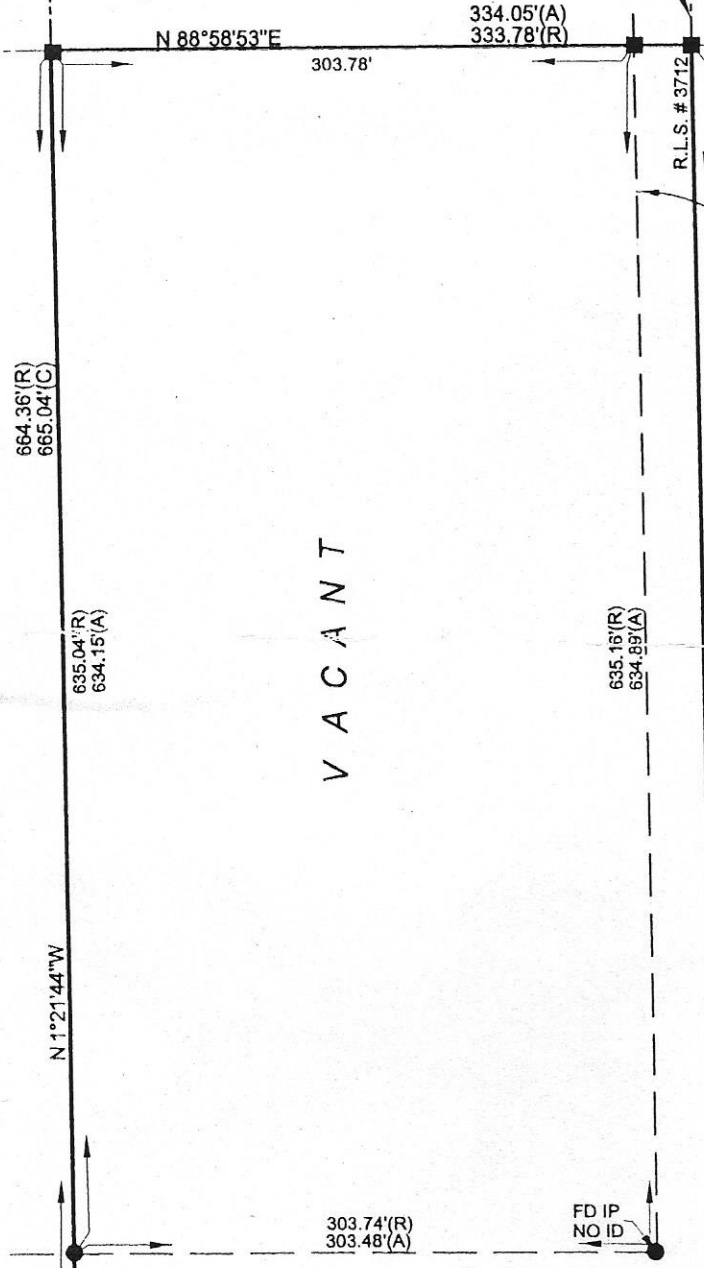
TRACT 61
NORTH 1/2 OF SOUTHWEST 1/4 OF
SOUTHEAST 1/4 OF SOUTHWEST

TRACT 62
SOUTH 1/2 OF SOUTHWEST 1/4 OF
SOUTHEAST 1/4 OF SOUTHWEST

(NOT INCLUDED)

VACANT

60' ROAD EASEMENT



(BASE BEARING) S 89°00'15"W 333.75'
60' ROAD EASEMENT
245.83' SOUTH LINE OF SECTION 16
NORTH RW LINE

1/4
80TH TERRACE (PAVED)
NORTHERN RAILROAD

PC

09

09

C1

PT

FD IP
NO ID

R.L.S. # 3712

664.36'(R)
665.04'(C)

635.04'(R)
634.15'(A)

635.16'(R)
634.99'(A)

334.05'(A)
333.78'(R)

N 88°58'53"E

303.78'

665.17'

S 1°21'33"E

303.74'(R)
303.48'(A)

245.83'